



RM CC

Modular fuse holders

for industrial class CC fuses

Fuse protection

new



The solution for

- > Distribution boards
- > Motor and Control circuits
- > Transformers protection
- > Measuring devices and multi-function meter protection

Strong points

- > Improved safety
- > High breaking capacity
- > Specific format and accessories
- > Label holder

Compliance with standards

- > UL 4248-4



Function

RM CC are modular DIN rail mounted fuse holders for UL Class CC fuses. They are available with and without LED indication in 1, 2 and 3-pole versions. **RM CC** fuse holders are IP20 protected from touch by fingers and provide safe breaking and isolation of electrical circuits up to 600 V / 30 A.

Advantages

Improved safety

- Omnipolar and simultaneous disconnection.
- High dielectric strength. Protection IP2X.

High breaking capacity

Protection against overloads and short-circuits thanks to high breaking capacity fuses (200 kA rms).

Specific format and accessories

- Modular 45 mm cut-out design.
- Padlocking accessory available.

Label holder

- **RM CC** are equipped with a label holder for an easy circuit identification.

References

RM CC

Basic device Fuse size	30 A Class CC		30 A with LED Class CC	
	To be ordered in multiples of	Reference	To be ordered in multiples of	Reference
No. of poles				
1 P	12	5705 0001	12	5705 0011
2 P	6	5705 0002	6	5705 0012
3 P	4	5705 0003	4	5705 0013

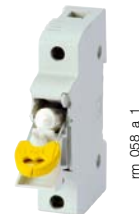
Accessories*

Key handle interlocking system

Use

Padlocking of the handle (padlock not supplied).

Rating (A)	Quantity (units)	Reference
30	5	5701 9040

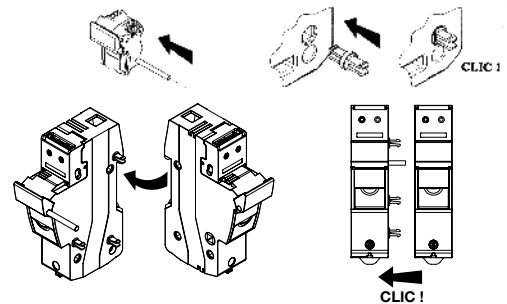


Coupling system

Rating (A)	Quantity (units)	Reference
30	12	5704 0003 ⁽¹⁾

⁽¹⁾ One coupling to attach two RM/CC.

Also sold in bags containing separate components (bags of 100 pieces) for assembling larger quantities. Please contact us.



rm_030_a_1_x_cat

Reinforced insulation kit

Rating (A)	Reference
30	5701 9010 ⁽¹⁾

⁽¹⁾ 1 reference = 1 set of 10 insulation kits



access_361_a

* Non UL.

Characteristics

Characteristics according to UL 4248-4

Rated operational current (A)		30 A
Fuse size		class CC
Rated operating voltage (V)		600
Dielectric strength (V)		2200
LED working voltage ⁽¹⁾		120 ... 600 VAC
Rated power dissipation (W/P)		3
Protection degree		IP20
Class CC fuse protected short-circuit withstand		
Prospective short-circuit current (kA rms.)		200
Design current derating coefficient for N poles side by side		
N = 1 ... 3		1
N = 4 ... 6		0.8
N = 7 ... 9		0.7
N ≥ 10		0.6
Connection		
Wire type (solid / stranded Cu)		60 / 75°C
1 wire	Minimum Cu cable cross-section solid / stranded	0.75 mm ² / 18 AWG
	Maximum Cu cable cross-section solid / stranded	16 mm ² / 8 AWG
2 wires	Minimum Cu cable cross-section solid / stranded	0.75 mm ² / 18 AWG
	Maximum Cu cable cross-section solid / stranded	10 mm ² / 8 AWG
Wire strip (mm / in)		10 / 0.39
Maximum tightening torque		2.5 Nm / 22 lb.in
Fixing		DIN rail 35 mm DIN 46277/1-3 (EN50022)
Mechanical characteristics		
Weight of 1 P (kg / lb)		0.057 / 0.126
Weight of 2 P (kg / lb)		0.114 / 0.251
Weight of 3 P (kg / lb)		0.170 / 0.375

(1) For fuse holders with LED indicator.

Dimensions (in / mm)

30 A

